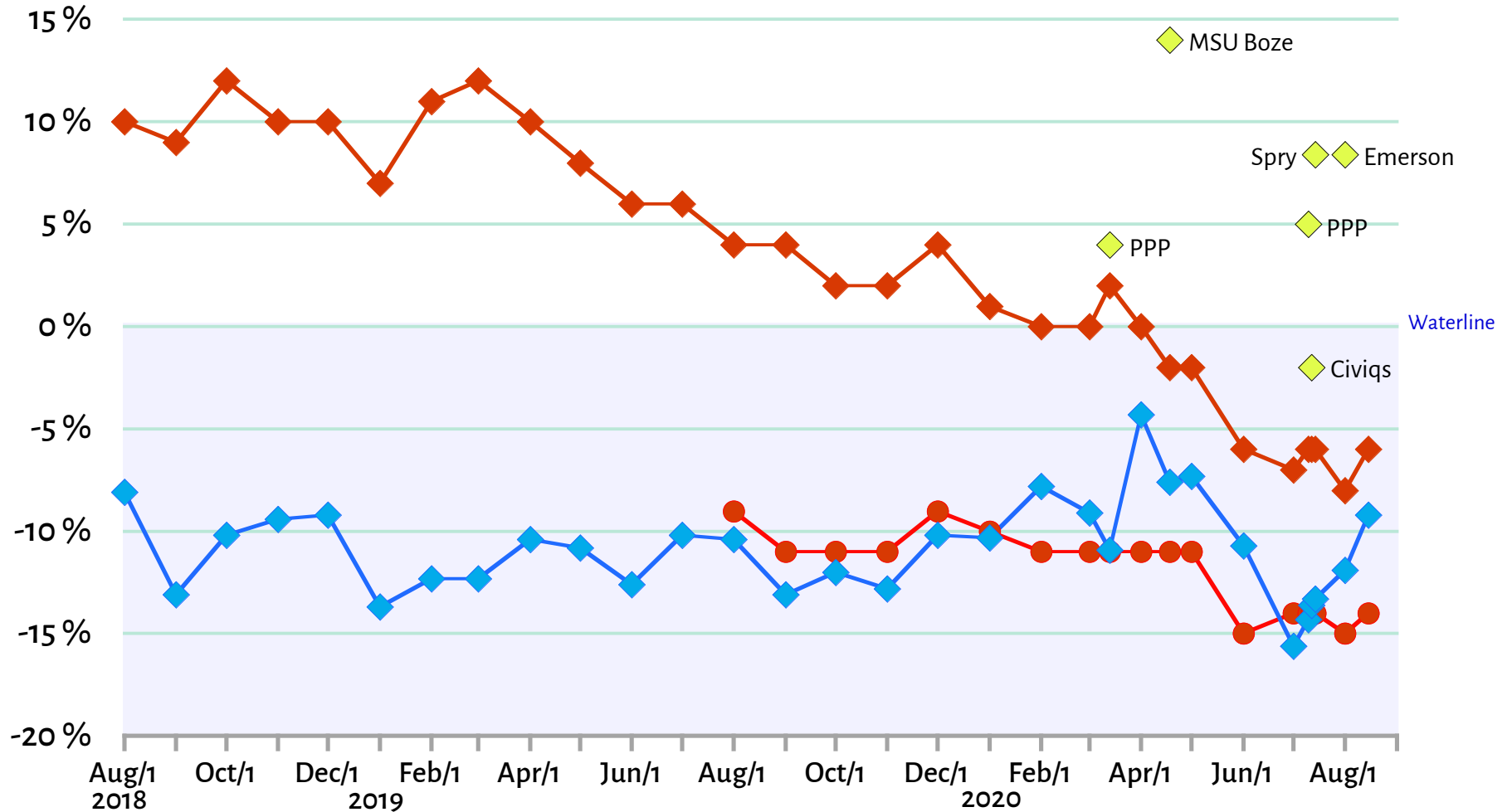


Net Job Approval for President Trump

- ◆ Montana, Civiqs tracking
- USA, Civiqs tracking
- ◆ USA weighted average, FiveThirtyEight
- ◆ Montana, various polls



The margin of error/credibility interval for all polls is approximately 4 percent. Whether Civiqs used the same panel for its tracking poll and its Montana poll is unknown.

© James Conner, flatheadmemo.com
 Data: civiqs.com, fivethirtyeight.com
 Permission granted to republish with credit
 18 August 2020